

ALL SAINTS ROCK PROJECT

PLANS FOR THE CHURCH OCTOBER 2018

A GUIDE TO THE MAIN FEATURES
AND CHANGES



These notes are very brief explanations of the drawings on the plan. They are not intended to be a full explanation of everything. Also, none of the mechanical and electrical services are highlighted. Features not highlighted on the plans include:

- a new heating system which will probably be underfloor
- a new lighting system
- a new audio system
- a new screen and projector system
- new electric cabling and plumbing throughout
- a new floor throughout
- redecoration and decoration throughout

Letters on the display plans e.g. A, B & C have a corresponding letter in this booklet with an explanatory note.

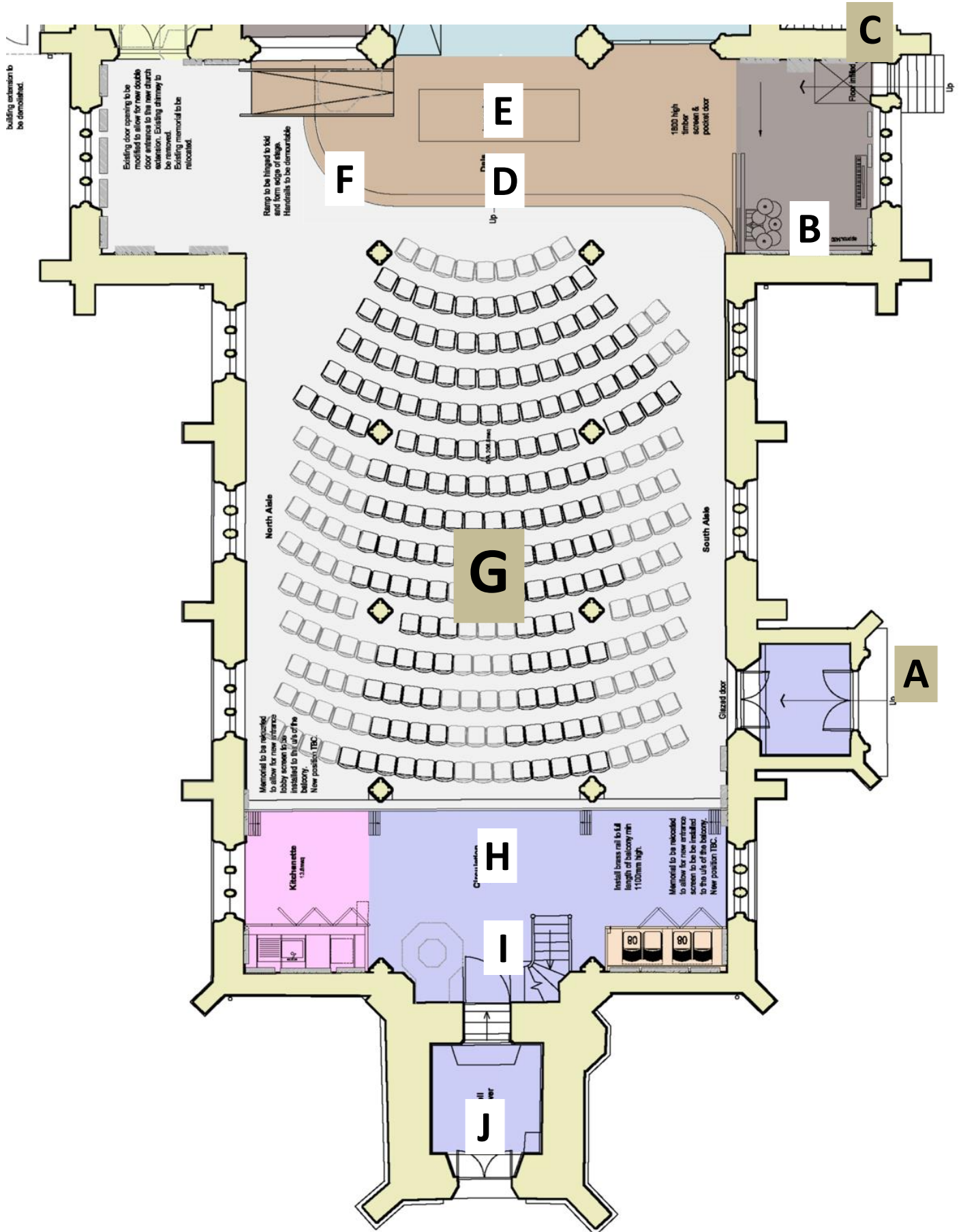
For those who do not know we call this project the ROCK Project. ROCK stands for *Reimagining Our Building for the Kingdom (of God)*.

THE INTERIOR OF THE CHURCH

The main changes to the existing layout of the church are highlighted. Where the plans have changed since the last presentation in February 2018, these are noted.

- A. **SOUTH PORCH AND ENTRANCE:**
No change, except wooden doors to be pinned back when church is open.
- B. **MUSIC STORE:**
The present musicians' area will remain as a store but with the addition of a 1.8M high screen so as to make the equipment secure when the church is open to visitors. More thought needs to be given to the memorials in this area including the 1641 of Arthur Sherstone, (the one with the skull!)
- C. **REMEMBRANCE CHAPEL:**
This will remain as it is, but cleared of clutter and made more of as a quiet space for prayer and ministry.
- D. **BAPTISTRY:**
We hope that it will be both practically and financially possible to install a baptistry in this area. It will have a cover over it when not in use. *This is a change from February.*
- E. **DAIS, CHANCEL AND SANCTUARY**
The dais and chancel areas will be on the same level i.e. the current level of the chancel will be lowered. *This is a change from February.* Please note that the current drawing shows a ramp on the dais next to the organ but this is wrong. There will be no need for a ramp but there will be a ramp from the nave floor up to the dais and chancel area. The Sanctuary area at the far end, where there is a rail, will remain on a higher level.

THE MAIN PART OF THE CHURCH FROM THE DAIS TO THE BELLTOWER



F. PULPIT:

It is proposed to remove the pulpit as it is hardly ever use, is in need of substantial repair and sits where we would like to place a ramp. *This is a change from February.*

G. NAVE AND CHAIR LAYOUT:

This arrangement shows 270 chairs laid out albeit with limited circulation room. This is more seating capacity than in the present nave pews. Different chair arrangements can be made. More chairs can be put under balcony.

H. BALCONY:

No significant changes are planned to the balcony. The pew-bench seating will remain. A safety rail will be fitted to the front of the balcony and the sound desk may be relocated elsewhere.

I. AREA UNDER BALCONY

(a) Kitchenette: This is a small kitchenette, similar to the one in the Upper Room in the Church Centre. It is in addition to kitchen in the extension but would be useful for a small group meeting under the balcony or when there are more than 200 people attending a service or event. It will be behind folding doors when not in use. (NB: For comparison, there are 3 kitchenettes in the Centre in addition to the main kitchen.)

(b) Chair Store: To hold 160 chairs behind folding screen.

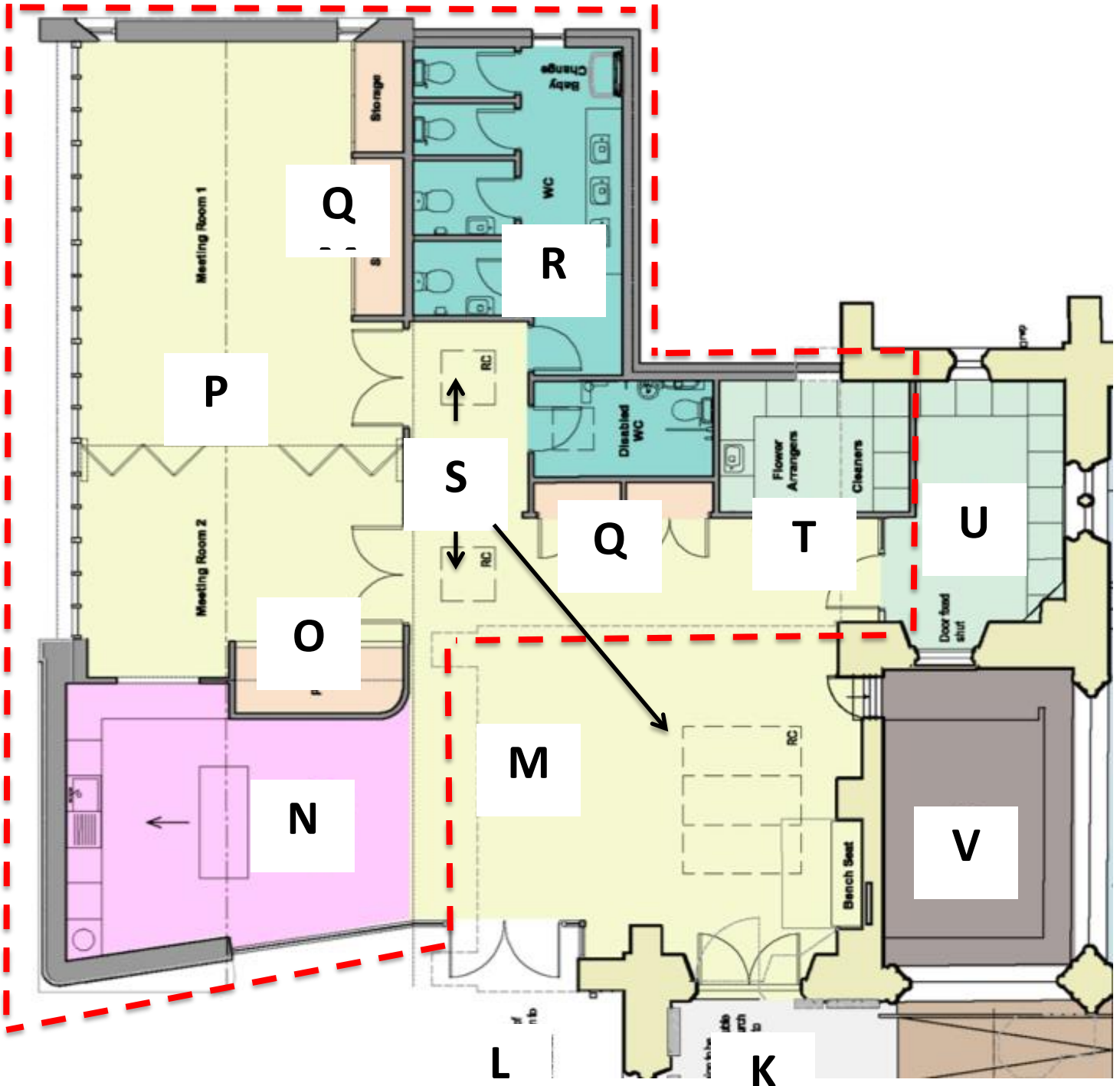
(c) Folding Glazed Screen: Mainly glazed folding screen under front edge of balcony so as to create an enclosed space.

(d) Floor Levels: The level of the floor under the balcony will now be the same as the level in the nave ie there will be no step down.

J. BELL TOWER:

No changes are planned here.

WELCOME AND HOSPITALITY AREA EXTENSION
RED DASHES SHOW AREA OF NEW BUILD



WELCOME AND HOSPITALITY AREA (EXTENSION)

There have been significant changes in this part of the plan since February 2018. The overall floor area has not changed but the internal arrangements have been completely altered. See February Plan for comparison.

- K. **NEW DOORS FROM FOYER INTO MAIN CHURCH:**
These will be automatic glazed doors and wider than the present door between church and 'choir vestry'.
- L. **NEW MAIN ENTRANCE:**
This will now be the new main entrance into church through the foyer but the South Porch entrance will remain.
- M. **FOYER/RECEPTION AREA:**
This will be the main welcome point into the church both before and after services and events. It should be able to accommodate between 120-140 people standing around talking and holding a drink.
- N. **KITCHEN/SERVERY:**
This is a modest kitchen space. It is not a fully-fledged cooking kitchen, but it could operate as a cafe. There will be a hatch into the adjoining meeting room. The servery will be on wheels so that it can be moved anywhere in the foyer area.
- O. **PLANT ROOM:**
This is a space for storage and/or some of the control panels for the various services in the building.
- P. **MEETING ROOM:**
There is now only one meeting room, which is the same size as the larger room shown in the February plans. However a folding screen can be installed (funds permitting) so as to give the option of two rooms. *This is a change from February.*

Q. STORAGE:

Storage cupboards are in Meeting Room and on the side of the Disabled WC opening into the foyer.

R. WC's

There will be four unisex WC's and one fully accessible WC. The WC's will have floor to ceiling partitions and doors. Three of them (including the fully accessible WC) will have washbasins inside. *This is a change from February.*

S. ROOFLIGHTS:

There are three roof lights to bring more light into the foyer/gathering space.

T. FLOWER AND CLEANING STORE:

What the title says!

U. VESTRY:

The vestry will remain in its present position. *This is a change from February.* Because it currently has damp problems, it will need work to be done on it and a new door will be created to lead into the new foyer area. Probably the existing door will be blocked up.

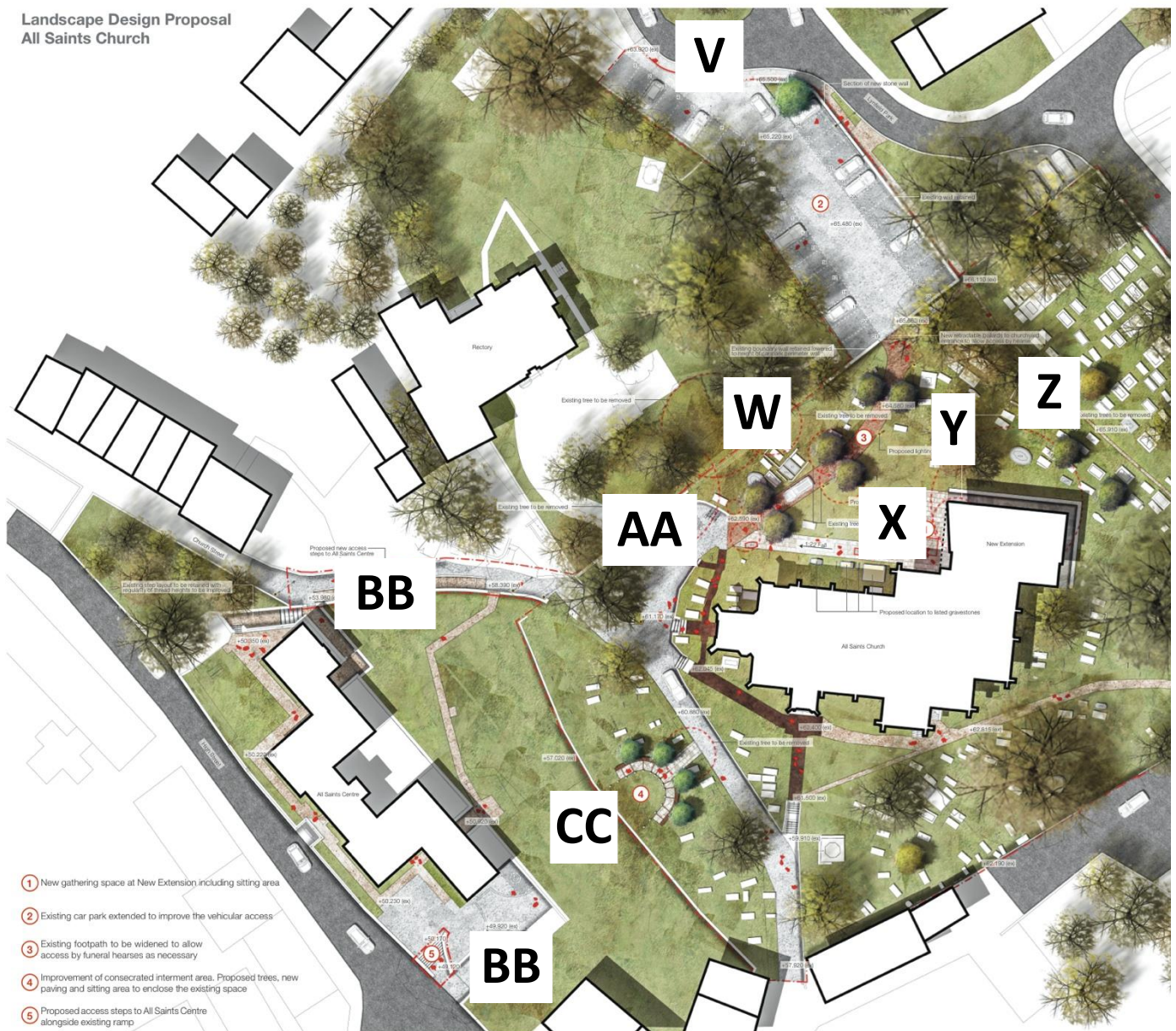
V. ORGAN:

The organ will remain in its present position and will be thoroughly renovated.

THE LANDSCAPE

This is where most changes have occurred since February. The scale of works has been greatly reduced, partly because of costs and partly because the planners were not happy with what they saw.

Landscape Design Proposal
All Saints Church



W. CAR PARK:

The intention is to extend the car park into the lower part of Lynfield Park and to have the entrance/exit there, rather than in its present position. That will mean 34 parking spaces. The unsightly metal gates will be removed and removable bollards put there. The wall between the churchyard and car park will be lowered so as to allow better visibility of the church. Reclaimed stone will be used for extending the car park boundary wall. We will need the permission of the Council to extend the car park because it will be on Council owned land.

X. PATHWAY FROM CAR PARK DOWN TO CHURCH:

This will be widened slightly to allow for easier access for hearses and larger vehicles. We are proposing the removal of the existing 4 yew trees which are overgrown (although one has been badly damaged) but they will be replaced by 3 pairs of yew trees, which will be more column shaped.

Y. NEW PATHWAY AND GATHERING SPACE:

The piazza idea has now gone since the February presentation. But we want a new straight path direct to the new front entrance, wide enough for a vehicle. There will still be a small gathering area outside the new main entrance. This area and the pathway will be paved with stone not tarmac.

Z. TREE REMOVAL AND TREE REPLACEMENT:

Altogether 10 trees are planned to be removed to make way for the extension and for the new pathway and gathering space in front of the new entrance. 15 replacement trees will be planted. We hope that when the work is done, there will be a better churchyard maintenance programme so that things do not get overgrown. This will need to be discussed with the Council, which is responsible for the grounds maintenance of the churchyard.

AA. HEADSTONE AND MONUMENT RELOCATION:

Altogether 32 of the existing 500+ headstones and monuments are planned to be relocated to make way for the extension, the new pathway and gathering area.

BB. DISABLED PARKING BAYS AND BIKE RACK:

There will be 3/4 disabled parking bays and a secure place for bicycles.

CC. ACCESS TO THE CHURCH CENTRE:

Three changes to improve the access are proposed:

- (a) **Step up Church St:** To create some steps and a new handrail on one half of the steep part of Church St. The other half would remain step-free for buggies etc. We think this would be a benefit to everyone not just those using the church centre or church.
- (b) **Steps from Church St down to Church Centre:** At the moment there is a mix of steps and an uneven slope leading from Church St to the base of the Church Centre. The plan is to have steps all the way down.
- (c) **Steps from the High St up to Church Centre:** At the far end of the Church Centre, there is a steep pedestrian slope. We propose putting in some steps there.

DD. REMEMBRANCE GARDEN:

The Remembrance Garden (for the internment of ashes) is not marked in any way at present. The proposal is to create some semi-circular bench seating around the area with four new trees behind the seating. One of the existing three large yew trees would be removed so as to allow a proper pathway to the seating area.

